



低压抽出式开关柜 Low-voltage Draw-out Switchgear

GCK



天仑电气 - 为您提供一流的电力系统解决方案
Tianlun Electric, provide you with first-class power system solution

宁波天仑电气有限公司
NINGBO TIANLUN ELECTRIC CO., LTD

宁波市北仑区江南中路 10 号
No. 10, Jiangnan Center Road, Beilun, Ningbo, China
传真 (Fax): +86-574-8619 3383 网址 (Web): www.cn-tianlun.com

联系电话 (TEL)
+86-574-8619 3396 (中国)
+86-574-8619 3389 (International)



企业官网
Website qr code



微信公众号
Wechat qr code

本型录文字、参数规格及资讯仅供参考。产品以实物为准，内容亦会随时更新。本公司样本及商标版权所有，翻录必究。型录所有机型为我司专利产品，仿冒必究。
The text, specifications and information of catalogue are for only reference. Products depend on the actual model, the content will be updated without notice. The company sample and trademark copyright reserved, and counterfeiting is not allowed. all the models for our patented products, copying is not permitted.

宁波天仑电气有限公司
NINGBO TIANLUN ELECTRIC CO., LTD



公司简介 Introduction

宁波天仑电气有限公司(以下简称公司)成立于2001年1月。

公司坐落于浙江宁波,毗邻“东方大港”北仑港。拥有10000平方米的研发生产基地,年产值超亿元,目前有80多名年轻朝气的员工,其中60%为本科学历。公司是集研发、生产、销售、服务于一体的高新技术企业,致力于打造高品质的智能化、节能型、定制模式的输变电设备产品。

公司目前有符合国际及国内标准3大类18种产品,包括24kV中置式开关柜及环网柜,12kV中置式开关柜及环网柜,440V固定式分隔柜,抽屉式开关柜,预装式变电站,低压母线槽(合作生产),10kV变压器(合作生产)等等,同时部分为ABB、Schneider的授权产品。公司立足于浙江,为很多大型的制造企业、房产开发、学校、港口等用户提供了许多高质量的产品和服务,同时也出口到东非、北非及东南亚国家,获得了客户的一致满意。

公司严格执行ISO9001质量保证体系,标准化体系,安全生产标准体系,国家CCC认证体系。坚持持续提升产品质量,追求零缺陷产品,全心全意服务用户的质量方针,坚持以人为本,鼓励创新,精细化的管理理念,坚持以感恩在心为核心价值观,为我们的用户提供最好的产品和服务。

Ningbo TIANLUN Electric Co., Ltd was established in year 2001, January. It is located in Ningbo, near Beilun port, which is called "oriental grand port". TIANLUN has 10000-square-meter researching and developing workshop and annual output value exceeds 100 million. TIANLUN has a professional team composed of 80 innovative staff, most of them have bachelor's degrees. TIANLUN is a company that integrates researching, developing, selling and service. Our purpose is to create high quality electric equipment product which is intelligentized, energy-saving and customized.

TIANLUN mainly have 18 types of products which belong to 3 majors as follow: 24 kV Intermediate switchgear and Ring Main Unit Switchgear, 12kV Intermediate Switchgear and Ring Main Unit Switchgear, 440V Fixed Isolated Switchgear, Preparatory Transformer Substation, Low Voltage Bus Duct (coproduction) and 10kV transformer (coproduction). Some products are Licensed by ABB and Schneider. TIANLUN have been providing high quality products to large manufacture enterprise, real estate, school and port constructions. At the mean time, our product are exported to Africa and southeastern countries and win satisfaction from the overseas customers.

TIANLUN strictly stick to ISO9001 standard system, standardization system, safety standard system and CCC authentication system. Our quality policy is producing good and zero defect product, having customers well served. Our management policy is people orientation, creation encouragement and high-effective system. TIANLUN always hold a thankful heart and provide top-level product with best service.

用途 Usage

GCK 低压抽出式开关柜适用于三相交流 50、60Hz, 额定电压 380V 额定电流 4000A 及以下的三相四线制及三相五线制电力系统, 作为接受电能和分配电能之用。广泛应用于发电厂、变电所、厂矿企业和高层建筑的动力配电中心和电动机控制中心 MCC。

GCK low-voltage draw-out switchgear is applicable to three-phase four-wire and three-phase five-wire power systems with three-phase AC 50, 60Hz, rated voltage 380V and rated current 4,000A and below and is used to accept and distribute electric energy. It has been widely applied to power distribution center PC and motor control center MCC of power plants, substations, industrial and mining enterprises and high-rise buildings.

符合标准 Standards

本产品符合:

This product shall conform to:

- GB7251.1 低压成套开关设备和控制设备 第 1 部分: 总则
- GB7251.12 低压成套开关设备和控制设备 第 2 部分: 成套电力开关和控制设备
- IEC61439 低压成套开关设备和控制设备
- GB7251.1 Low-voltage Switchgear and Controlgear Assemblies Part 1: General Provisions
- GB7251.12 Low-voltage Switchgear and Controlgear Assemblies Part 2: Power Switchgear and Controlgear Assemblies
- IEC61439 Low-voltage Switchgear and Controlgear Assemblies

使用条件 Service Condition

- 周围空气温度不高于 +40℃; 不低于 -5℃; 并且 24 小时内其平均温度不高 +35℃。
- 周围空气相对湿度在最高温度为 +40℃时不超过 50%, 在较低温度时允许有较大的相对湿度, 如 +20℃时为 90%, 但应考虑到由于温度的变化有可能会偶尔产生适度的凝露。
- 户内使用, 使用地点的海拔高度不得超过 2000m。
- 应安装在无剧烈震动和冲击以及不足以使电器元件受到腐蚀的场所。
- The ambient air temperature shall not be higher than +40℃ and not be lower than -5℃, and the average temperature within 24h shall not be higher than +35℃.
- The relative humidity of ambient air shall not exceed 50% at the maximum temperature of +40℃ and may be higher at lower temperature, for example, 90% at +20℃. Moderate condensation may be generated occasionally due to temperature variation.
- The product shall be used indoors and the height above sea level in the place of use may not exceed 2,000m.
- The product shall be installed in the place where there is no vibration and shock and the electrical apparatus elements will not be corroded.



ISO9001-2000



CCC 认证



WSC 北京世标认证中心



结构特点

Normal Service Conditions

开关柜的基本框架采用拼装组合式结构，采用型钢由螺栓互相紧固联接成基本框架，再按方案变化需要，加上相应的门、封板、隔板、安装支架以及母线、功能单元等零件组成一面完整的开关柜，柜内结构件都经过镀锌处理，并实行模块化安装（模数 E=20mm），开关柜板面采用优质冷轧钢板经数控机床加工成型，表面经过酸洗、磷化处理后再静电喷塑，抗磨耐腐，既有牢固的机械强度，又有可靠的接地保护连续性。

开关柜隔室可分为功能单元室、母线室、电缆室，各单元的功能作用相对独立且区域之间由连续接地的金属板严格分隔，保证使用安全防止事故蔓延。

MCC 柜抽屉有 200mm、300mm、400mm、600mm 和 200/2mm 五种规格。抽屉具有连接位置、试验位置和分离位置。各抽屉与开关设有机械联锁装置；当开关处于分断时，抽屉才能抽出或插入；当开关处于合闸时，抽屉不能抽出或插入。为防止未经允许的操作，操作机构能使用挂锁将开关锁定在分断位置上。同规格的功能单元抽屉可以方便地实现互换，每一个功能单元抽屉对应有 20 对辅助接点，能满足异地操作控制、电度计量和与计算机接口的自动化检测系统的需要。

The basic frame of switchgear adopts assembled combined structure and it is manufactured by fastening and connecting the profile steels with bolts, and then it is installed with corresponding door, closing plate, partition plate, installation bracket and bus and function units, etc. into a complete switchgear according to the change of scheme. The structural parts in switchgear are galvanized and adopt modular installation (modulus E=20mm). The switchgear panel is made of high-quality cold-rolled steel plates which are machined and shaped by numerically controlled machine tool, and after pickling and phosphating, the surface undergoes electrostatic plastic spraying and is resistant to wear and corrosion, so it has solid mechanical strength and reliable ground protection continuity.

The switchgear compartment is divided into function unit chamber, bus chamber and cable chamber, and the function of each unit is independent of each other and the areas are strictly isolated by continuously grounded metal plate, thus ensuring the safety of use and preventing spreading of accidents.

MCC cabinet drawer has five specifications of 200mm, 300mm, 400mm, 600mm and 200/2mm. The drawer has connected position, test position and separated position. Mechanical interlocking device is equipped between each drawer and switch. Only when the switch is disconnected, can the drawer be drawn out or inserted. When the switch is closed, the drawer may not be drawn out or inserted. To prevent unauthorized operation, the operating mechanism can lock the switch in OFF position with a padlock. The function unit drawers of same specification are interchangeable, and the drawer of each function unit has 20 pairs of auxiliary contacts, to meet the needs of automatic monitoring systems of operation control, electricity metering and computer interface in different place.

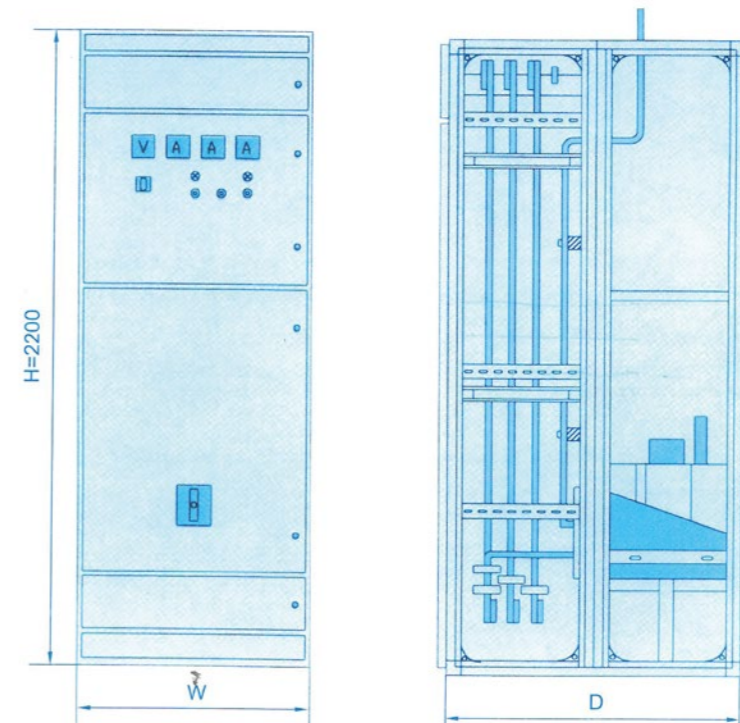
使用注意事项

Precautions for Use

- GCK 系列柜为不靠墙安装、正面操作、双面维修的低压配电柜。柜的维修通道及柜门，必须是考核合格的专业人员方可进入或开启进行操作、检查和维修。
- 空气断路器、塑壳开关经过多次分、合，特别是经过短路分、合后，会使触头局部烧伤和产生碳类物质，使接触电阻增大，应按断路器使用说明书进行维护和检测。
- 经过安装和修复后，必须严格检查各隔室之间、功能单元之间的隔离状况确已恢复，以确保本装置良好的功能分隔性，防止出现故障扩大。
- GCK-series cabinet is a front-operated low-voltage distribution cabinet which is installed not against the wall and can be repaired on both sides. The maintenance channel and door of the cabinet may be entered or opened to be operated, inspected and maintained by qualified professionals only.
- As the air circuit breaker and moulded case circuit breaker, after opening and closing many times, particularly after short-circuit opening and closing, may cause the contact to be locally burnt and generate carbon substances, thus increasing the contact resistance, they should be maintained and overhauled according to operating instruction of circuit breaker.
- After installation and repair, strictly inspect the separation between chambers and between function units to confirm it has been recovered, so as to ensure good functional separation of this device and prevent expansion of faults.

开关柜外形尺寸

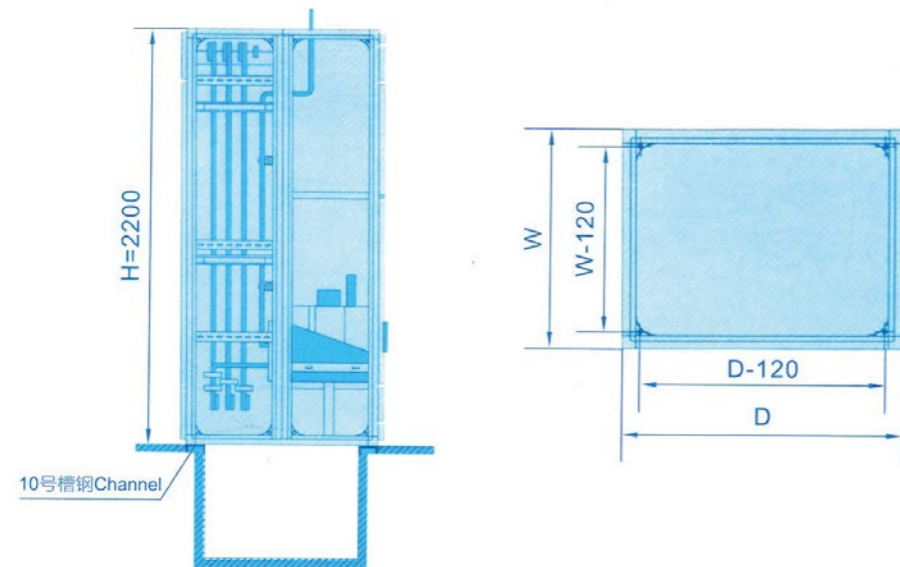
Overall Dimension of Switchgear



方案编号 Switchgear name	宽度 (mm) Width	深度 (mm) Depth	高度 (mm) Height
进线柜 Incoming cabinet	600,800,1000	800	2200
联络柜 Liaison cabinet	600,800,1000		
馈电柜 Feeder cabinet	600,800,1000		
抽屉柜 Drawer cabinet	600,800		
补偿柜 Compensation cabinet	600,800		

开关柜外形尺寸

Overall Dimension of Switchgear



项目 Item	数据 Parameters
额定绝缘电压 /Rated insulation voltage	AC600V
额定工作电压 /Rated operating voltage	AC380V
水平母线额定电流 /Rated current of horizontal bus	1250A, 1600A, 2000A, 3200A, 4000A
垂直母线额定电流 /Rated current of vertical bus	1000A
馈电电路最大电流 /Maximum current of feed circuit	2500A
抽屉回路最大电流 /Maximum current of drawer circuit	630A
控制电机最大容量 /Maximum capacity of control motor	320kW
额定频率 /Rated frequency	50Hz
水平母线峰值耐受电流 /Peak withstand current of horizontal bus (0.1s)	63kA, 105kA
水平母线短时耐受电流 /Short-time withstand current of horizontal bus (1s)	30kA, 50kA
垂直母线峰值耐受电流 /Peak withstand current of vertical bus (0.1s)	63kA, 105kA
垂直母线短时耐受电流 /Short-time withstand current of vertical bus (1s)	30kA, 50kA
额定工频耐受电压 /Rated power frequency withstand voltage	2500V
二次工频耐受电压 /Secondary power frequency withstand voltage	2500V
外壳防护等级 /Degree of protection of enclosure	IP30, IP40
外形尺寸 /Overall dimension	宽 :600mm, 800mm, 1000mm; 深 :800mm, 1000mm; 高 :2200mm Width:600mm, 800mm, 1000mm depth:800mm, 1000mm height :2200mm

安装和使用

Installation & Use

产品的安装应按配电设备的一般安装方法进行，基础槽钢和采用螺栓固定方式时的螺栓由用户自备，主母线连接时，必须使搭接面贴合、平整，否则松开并柜螺栓再进行调整。

产品安装后投运前需作检查与试验，检查柜表面覆盖材料（如喷塑）有否损坏，柜内是否干燥、整洁；检查柜内是否有异物放置（如螺栓，电焊条），每个螺丝紧固有无松动，漏拧紧；检查操作机构是否灵活，抽屉抽插有无卡阻、碰撞现象，机构联锁是否可靠，动作是否准确；检查开关整定电流值、仪表的刻度、互感器的配比与极性是否符合要求。最后用 1000V 兆欧表测量绝缘电阻值，应不低于 1 兆欧，用临时电源试送电，电动合分，指示均应准确无误。

投入运行后应保持日常维护，定期观察母线的发热情况，发现温升偏高或有异常声响时应查明原因。视运行环境因素，每 2 至 5 年进行一次清理工作及维护保养工作。

The product should be installed in the general installation method of power distribution equipment. The foundation channel steels and bolts needed for fixing shall be provided by the user. The connection of main bus must ensure the lap surface fits and is flat; otherwise, it's required to loosen the assembled cabinet bolts and adjust them.

After installation and before operation of the product, inspect and test it to see if the covering material (e.g. sprayed plastics) of the cabinet surface is damaged, if the cabinet inside is dry and clean, if there are foreign matters (e.g. bolts, welding electrode) in the cabinet, if each bolt is fastened and not loose or is not fastened, if the operating mechanism is flexible; if the drawer is smooth to draw out and insert without collision, and if the mechanism interlock is reliable and the action is accurate; check if the setting current value of circuit breaker, scale of meter, and transformation ratio and polarity of transformer meet the requirements. Finally, measure the insulation resistance with a 1,000V megameter, and it should not be lower than 1 MΩ. Transmit power with temporary power supply, close and open it electrically, and the indication should be correct and accurate.

After the product is put into operation, maintain daily maintenance, regularly observe the heating condition of bus, and once discovering the temperature rise too high or abnormal sound, find out the reason. Carry out cleanup and maintenance work every two to five years depending on the environmental factors.

产品成套

Complete Set of Product

制造厂供货时应提供下列文件及附件：送货清单、产品合格证、产品样本、出厂检查报告、一次系统图、控制原理图和二次接线图、柜门钥匙、操作手柄及合同规定的备品配件、主要元器件的使用说明书。

When supplying the product, the manufacturer shall provide the following documents and accessories: shipping list, product certificate, product sample, delivery test report, primary system diagram, control schematic diagram and secondary connection diagram, key of cabinet door, operating handle, spare parts and accessories specified in contract, and operating instructions of main elements.

订货须知

Order Information

用户订货时，应提供下列资料：

The user shall provide the following information when ordering:

- 主电路方案及组合排列
- 辅助电路控制和接线原理
- 开关柜在配电室的平面布置
- 进线和出线形式及接口要求
- 柜内所装元件的详细规格和参数
- 开关柜表面漆膜颜色或按我公司标准
- Main circuit schemes and their combination
- Auxiliary circuit control and connection principle
- Switchgear plane layout in power distribution room
- Incoming and outgoing form and interface requirement
- Specific specification and parameter of elements installed in switchgear
- Paint film color of switchgear surface or follow the Company's standard

M 型万能断路器

M-type Universal Circuit Breaker

断路器型号 Circuit breaker model	M10	M10	M12	M16	M20	M25	M32	M40
额定电流 (A) Rated current (A)	800	1000	1200	1600	2000	2500	3200	4000
额定电压 (V) Rated voltage (V)	690							
极数 Number of poles	3P,4P							
整定电流 Setting current	0.4In~1In 共 32 档 /0.4In ~ 1In, totally 32 gears							
短路保护 Short-circuit protection	Im=1.5, 2, 3, 4, 5, 6, 8, 10xI _r							
分断能力 Breaking capacity	N1 型 40kA N1-type 40kA H1 型 65kA H1-type 65kA		N1 型 55kA N1-type 55kA H1 型 75kA H1-type 75kA		N1 型 75kA N1-type 70kA H2 型 100kA H2-type 100kA			
控制单元 Control unit	STR28				STR38			
外形尺寸 Overall dimension	435x367x439 (3P) 550x367x439 (4P)							
制造厂 Manufacturer	法国施耐德公司 /Schneider Electric							

NS 型塑壳开关

NS-type Moulded Case Circuit Breaker

断路器型号 Circuit breaker model	NS100	NS160	NS250	NS400	NS630
额定电流 (A) Rated current (A)	100A	160A	250A	400A	630A
额定电压 (V) Rated voltage (V)	690V				
极数 Number of poles	3P,4P				
整定电流 Setting current	16,25,40,63,80,100,125,160,200,250			0.4-1 x In 共 48 档 total 48 archivas	
短路保护 Short-circuit protection	Im=5,6,7,8,9,10 x I _r			Im=2,3,4,5,6,7,8,10 x I _r	
分断能力 Breaking capacity	N 型 25kA N-type 25kA H 型 70kA H-type 70kA	N 型 36kA N-type 36kA H 型 70kA H-type 70kA	N 型 36kA N-type 36kA H 型 70kA H-type 70kA	N 型 45kA N-type 36kA H 型 70kA H-type 70kA	N 型 45kA N-type 36kA H 型 70kA H-type 70kA
控制单元 Control unit	TM,STR22SE,STR23SE				
外形尺寸 Overall dimension	105X86X161(3P) 140X86X161(4P)			140X110X225(3P) 185X110X225(4P)	
制造厂 Manufacturer	法国施耐德公司 /Schneider Electric				

CM1 型塑壳开关

CM1-type Moulded Case Circuit Breaker

断路器型号 Circuit breaker model	CM1-63	CM-100	CM1-225	CM1-400	CM-630
额定电流 (A) Rated current (A)	63A	100A	225A	400A	630A
额定电压 (V) Rated voltage (V)	400V				
极数 Number of poles	3P,4P				
整定电流 Setting current	10,16,20,32,40,50,63	16,20,32,40,50,63, 80,2000,225	100,125,160,180,200 225	225,250,315,350,400	400,500,630
短路保护 Short-circuit protection	Im=10 x I _r				
分断能力 Breaking capacity	N 型 25kA N-type 25kA H 型 70kA H-type 70kA	L 型 35kA/L-type 35kA M 型 50kA/M-type 50kA H 型 85kA/H-type 85kA	L 型 50kA/L-type 50kA M 型 65kA/M-type 65kA H 型 100kA/H-type 100kA		
脱扣形式 Tripping form	热 - 电磁型 / Thermo-electromagnetic form				
飞弧距离 Flashover distance	0	50mm	100mm		
外形尺寸 Overall dimension	76X82X135	92X86X150	107X103X165	150X105X257	182X110X270
制造厂 Manufacturer	常熟开关厂 /Changshu Electric Factory				

TG 型塑壳开关

TG-type Moulded Case Circuit Breaker

断路器型号 Circuit breaker model	TG-100B	TG-225s	TG-400B	TG-100BD	TG-225H	TG-400BD
额定电流 (A) Rated current (A)	100A	225A	400A	100A	225A	400A
额定电压 (V) Rated voltage (V)	660V					
极数 Number of poles	3P,4P					
整定电流 Setting current	15,20,30,40,50,60 75,100	125,150,175, 200, 225	250,300,350,400	15,20,30,40 50,60,75,100	125,150,175,200 225	250,300,350,400
短路保护 Short-circuit protection	Im=10 x I _r					
分断能力 Breaking capacity	35kA			65kA		
脱扣形式 Tripping form	热 - 电磁型 / Thermo-electromagnetic form					
飞弧距离 Flashover distance	80mm	0	120mm	0	0	
外形尺寸 Overall dimension	90X85X150	105X86X165	140X103X260	90X85X150	105X103X165	140X103X260
制造厂 Manufacturer	嘉兴电气控制设备 /Jiaxing Electrical Control Equipment Factory					

GCK 低压抽出式开关柜 GCK Low-voltage Draw-out Switchgear

一次方案 Primary Scheme

方案编号 Scheme No.	01					
一次方案图 Primary Scheme Diagram						
规格分类 Specification classification	A	B	C	D	E	F
用途 Usage	受电 (上进线) Receiving power (upper incoming)					
额定电流 Rated current	4000A	3200A	2500A	2000A	1600A	1250A
柜体宽度 Switchgear width	1000mm		800mm		600mm	
占小室内高度 Chamber height	1800mm					
主要元件 Main elements	M40 ME-400 AH-40C	M32 ME-3200 AH-30C	M25 ME-2500 AH-25C	M20 ME-2000 AH-20C	M16 ME-2000 AH-20C	M12-M08 ME-1250 AG-10B
备注 Remarks						

方案编号 Scheme No.	02					
一次方案图 Primary Scheme Diagram						
规格分类 Specification classification	A	B	C	D	E	F
用途 Usage	受电 (下进线) /Receiving power (lower incoming)					
额定电流 Rated current	4000A	3200A	2500A	2000A	1600A	1250A
柜体宽度 Switchgear width	1000mm		800mm		600mm	
占小室内高度 Chamber height	1800mm					
主要元件 Main elements	M40 ME-400 AH-40C	M32 ME-3200 AH-30C	M25 ME-2500 AH-25C	M20 ME-2000 AH-20C	M16 ME-1600 AH-16B	M12-M08 ME-1250 AH-10B
备注 Remarks						

GCK 低压抽出式开关柜 GCK Low-voltage Draw-out Switchgear

一次方案 Primary Scheme

方案编号 Scheme No.	03					
一次方案图 Primary Scheme Diagram						
规格分类 Specification classification	A	B	C	D	E	F
用途 Usage	联络 /Contact					
额定电流 Rated current	4000A	3200A	2500A	2000A	1600A	1250A
柜体宽度 Switchgear width	1000mm		800mm		600mm	
占小室内高度 Chamber height	1800mm					
主要元件 Main elements	M40 ME-4000 AH-240C	M32 ME-3200 AH-30C	M25 ME-2500 AH-25C	M20 ME-2000 AH-20C	M16 ME-1600 AH-16B	M12-M08 ME-1250 AH-10B
备注 Remarks						

方案编号 Scheme No.	04				
一次方案图 Primary Scheme Diagram					
规格分类 Specification classification	A	B	C	D	E
用途 Usage	馈电 /Feeding power				
额定电流 Rated current	2500A	2000A	1600A	1250A	1600Ax2
柜体宽度 Switchgear width	800mm		600mm		600(800)mm
占小室内高度 Chamber height	1800mm				900mm
主要元件 Main elements	M25 ME-2500 AH-25C	M20 ME-2000 AH-20C	M16 ME-1600 AH-16B	M12-M08 ME-1250 AH-10B	M16-M08 ME-1600-ME-630 AH-16B-AH-6B
备注 Remarks					

GCK 低压抽出式开关柜 GCK Low-voltage Draw-out Switchgear

一次方案 Primary Scheme

方案编号 Scheme No.	05				
一次方案图 Primary Scheme Diagram					
规格分类 Specification classification	A	B	C	D	E
用途 Usage	馈电 (抽屉) / Feeding power (drawer)				
额定电流 Rated current	50A	100A	200A	400A	600A
柜体宽度 Switchgear width	600 (800) mm				
占小室内高度 Chamber height	200/2	200	300	400	600
主要元件 Main elements	NS-80 QSA-63	NS-100 CM1-100 TG-100	NS-250 CM1-225 TG-225	NS-400 CM1-400 TG-400	NS-630 CM1-630 TG-630
备注 Remarks	每柜可装 18 路 Each switchgear can contain 18 circuits	每柜可装 9 路 Each switchgear can contain 9 circuits	每柜可装 6 路 Each switchgear can contain 6 circuits	每柜可装 4 路 Each switchgear can contain 4 circuits	每柜可装 3 路 Each switchgear can contain 3 circuits

方案编号 Scheme No.	06				
一次方案图 Primary Scheme Diagram					
规格分类 Specification classification	A	B	C	D	E
用途 Usage	电动机控制 (不可逆) / Motor control (irreversible)				
额定电流 Rated current	7.5KW	30KW	75KW	100KW	150KW
柜体宽度 Switchgear width	600 (800) mm				
占小室内高度 Chamber height	200/2	200	300	400	600
主要元件 Main elements	QSA-63 B30 T25	NS-100 B65 T65	NS-160 B170 T16	NS-250 B250 T16	NS-400 B370 T16
备注 Remarks	每柜可装 18 路 Each switchgear can contain 18 circuits	每柜可装 9 路 Each switchgear can contain 9 circuits	每柜可装 6 路 Each switchgear can contain 6 circuits	每柜可装 4 路 Each switchgear can contain 4 circuits	每柜可装 3 路 Each switchgear can contain 3 circuits

GCK 低压抽出式开关柜 GCK Low-voltage Draw-out Switchgear

一次方案 Primary Scheme

方案编号 Scheme No.	07				
一次方案图 Primary Scheme Diagram					
规格分类 Specification classification	A	B	C	D	E
用途 Usage	电动机控制 (可逆) / Motor control (reversible)				
额定电流 Rated current	7.5kW	30kW	75kW	100kW	150kW
柜体宽度 Switchgear width	600 (800) mm				
占小室内高度 Chamber height	200/2	200	300	400	600
主要元件 Main elements	QSA-63 B30 T25	NS-100 B65 T65	NS-160 B170 T16	NS-250 B250 T16	NS-400 B370 T16
备注 Remarks	每柜可装 18 路 Each switchgear can contain 18 circuits	每柜可装 9 路 Each switchgear can contain 9 circuits	每柜可装 6 路 Each switchgear can contain 6 circuits	每柜可装 4 路 Each switchgear can contain 4 circuits	每柜可装 3 路 Each switchgear can contain 3 circuits

方案编号 Scheme No.	08				
一次方案图 Primary Scheme Diagram					
规格分类 Specification classification	A	B	C	D	E
用途 Usage	电动机控制 (Y / Δ) / Motor control (Y / Δ)				
额定电流 Rated current	7.5kW	30kW	75kW	100kW	150kW
柜体宽度 Switchgear width	600 (800) mm				
占小室内高度 Chamber height	200/2	200	300	400	600
主要元件 Main elements	QSA-63 B30 T25	NS-100 B65 T65	NS-160 B170 T16	NS-250 B250 T16	NS-400 B370 T16
备注 Remarks	每柜可装 18 路 Each switchgear can contain 18 circuits	每柜可装 9 路 Each switchgear can contain 9 circuits	每柜可装 6 路 Each switchgear can contain 6 circuits	每柜可装 4 路 Each switchgear can contain 4 circuits	每柜可装 3 路 Each switchgear can contain 3 circuits

GCK 低压抽出式开关柜 GCK Low-voltage Draw-out Switchgear

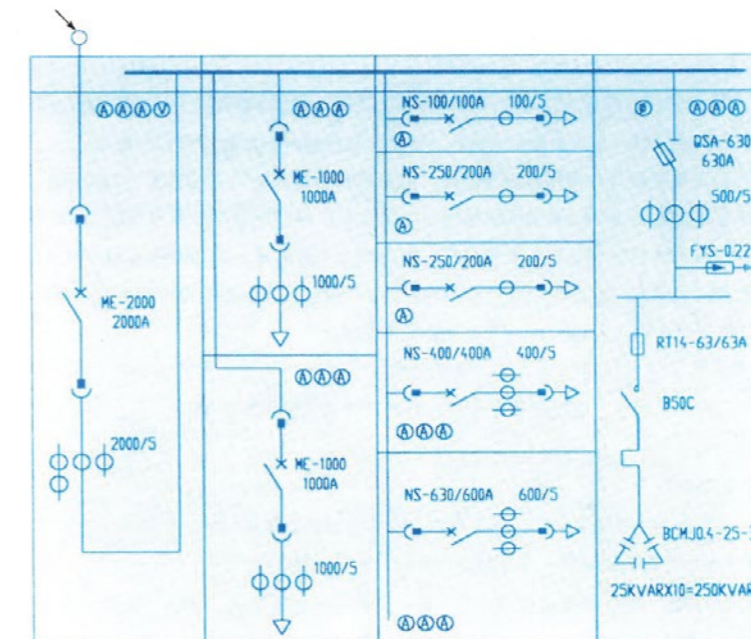
一次方案 Primary Scheme

方案编号 Scheme No.	09			
一次方案图 Primary Scheme Diagram				
规格分类 Specification classification	A	B	C	D
用途 Usage	电容柜 / Capacitor cabinet			
额定电流 Rated current	250kvar	200kvar	150kvar	120kvar
柜体宽度 Switchgear width	800 (600) mm		600 (800) mm	
主要元件 Main elements	QSA-630 TR14-63 B50C	QSA-400 TR14-63 B50C	QSA-250 TR14-32 B30C	QSA-250 TR14-32 B30C
备注 Remarks	25kvar x10 路 25kvar x 10 circuits	25kvar x8 路 25kvar x 8 circuits	15kvar x10 路 15kvar x 10 circuits	15kvar x8 路 15kvar x 8 circuits

方案编号 Scheme No.	10	11		
一次方案图 Primary Scheme Diagram				
规格分类 Specification classification		A	B	C
用途 Usage	电度表柜 Electric meter cabinet	变压器柜 / Transformer cabinet		
额定容量 Rated capacity		1600kVA	1000kVA	630kVA
柜体宽度 Switchgear width	600(800)mm	2600mm	2400mm	2200mm
柜体深度 Switchgear depth	1000mm	1600mm	1500mm	1400mm
主要元件 Main elements	DT868-2 PJ 接线盒 DT862-2 PJ junction box	SC8 1600kVA SCB 1250kVA	SCB 1000kVA SCB 800kVA	SCB 630kVA SCB 500kVA
备注 Remarks	每台可装 18 只 Each unit main contains 18 boxes			

GCK 低压抽出式开关柜 GCK Low-voltage Draw-out Switchgear

方案组合示例 Scheme Combination Sample



方案组合图
Scheme Combination Diagram

